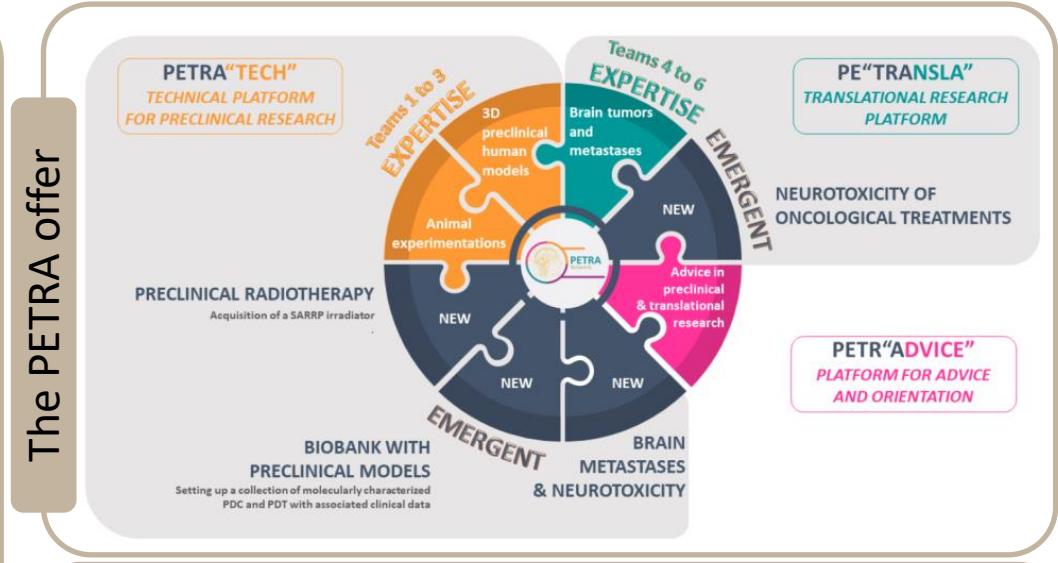
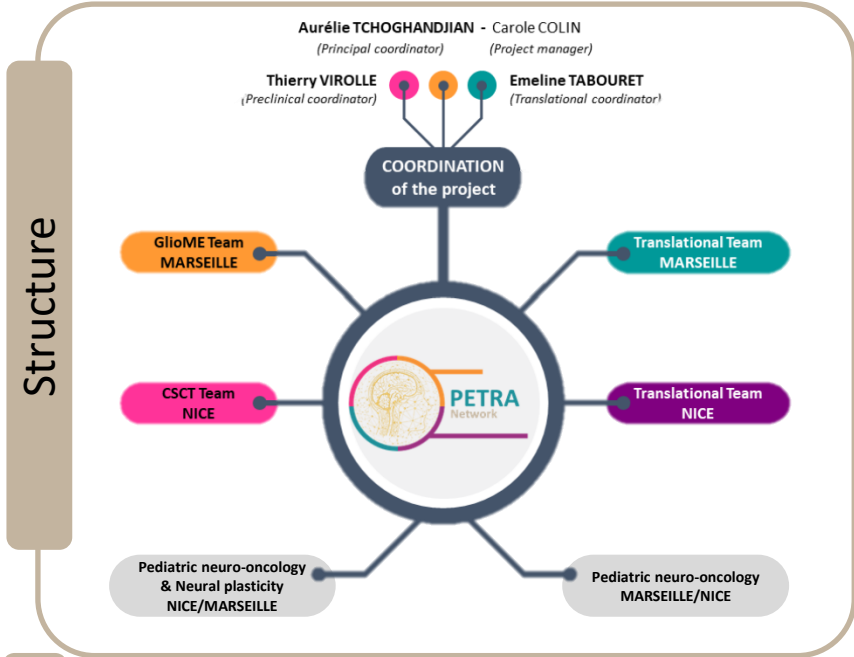


## Structuring a network to meet the challenges of neuro-oncology



**Contact**

Project manager: Carole Colin  
[carole.colin@univ-amu.fr](mailto:carole.colin@univ-amu.fr)

- Our aims**
- **Accelerating the Bench to Bedside**
    - Optimisation of preclinical models: **PETRA "TECH"**
    - Project design support: **PETR "ADVICE"**
  - **Facilitating the Bedside to Bench**
    - Access to patient samples and data: **PE "TRANSLA"**
    - Project design support: **PETR "ADVICE"**