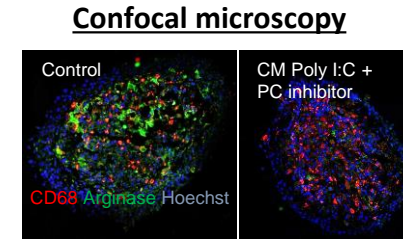
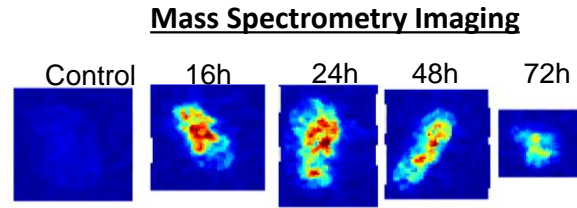
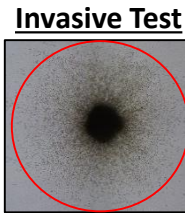
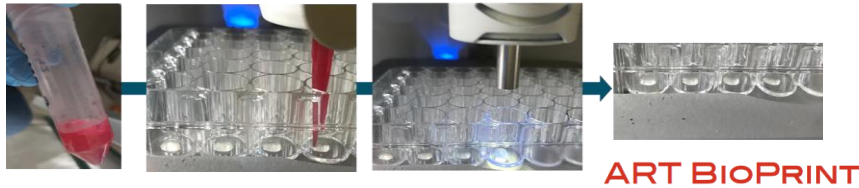


A platform dedicated to the development of different 3D culture models, in which thanks to our expertise in biology together with proteomics and mass spectrometry imaging, we propose a large range of analysis techniques, that allow a global understanding of each of the models.

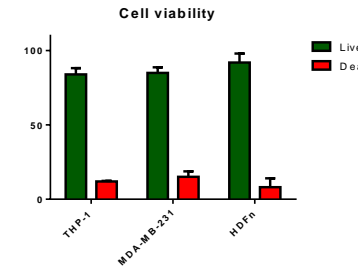
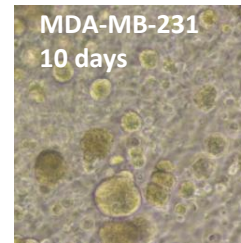
Spheroids with/without macrophages



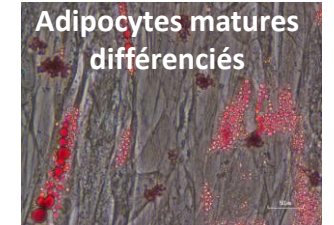
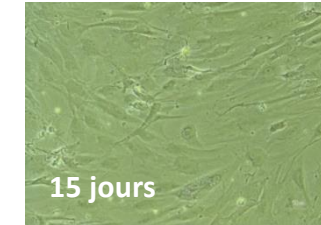
Bioprinting complex healthy and cancer breast model



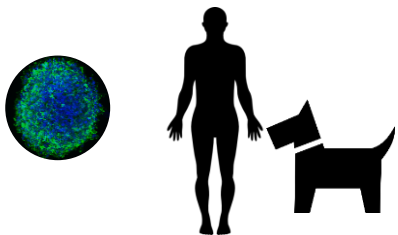
Printing with cell line



Purification d'ADSC (Adipose-derived Stem Cells)



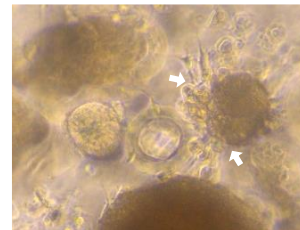
Organoids of human and canine breast cancer



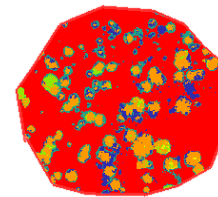
Breast Organoids biobanks

- OMERIC** (metastases)
46 patients recruited
- CARMA** (primary tumors + metastases)
43 patients recruited
- TUMDOG** (primary tumors)
42 patients

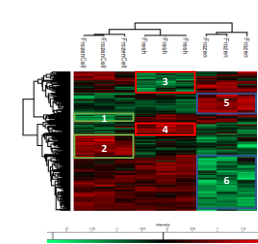
Mixed organoids



Mass spectrometry imaging



Proteomics



Response to treatment

