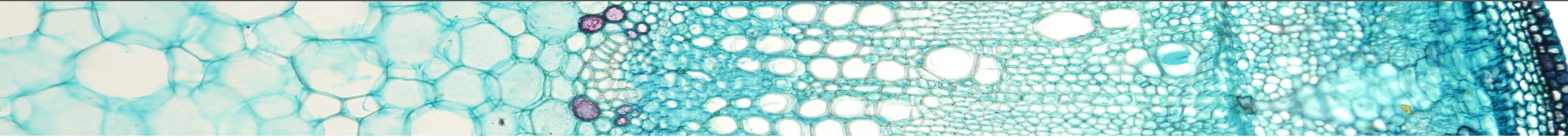




Plateforme Organoïdes de Montpellier (POM)



UNIVERSITÉ DE
MONTPELLIER



MUSE



PÔLE BIOLOGIE-SANTÉ



PÔLE AGRONOMIE
ENVIRONNEMENT-BIODIVERSITÉ



cirad



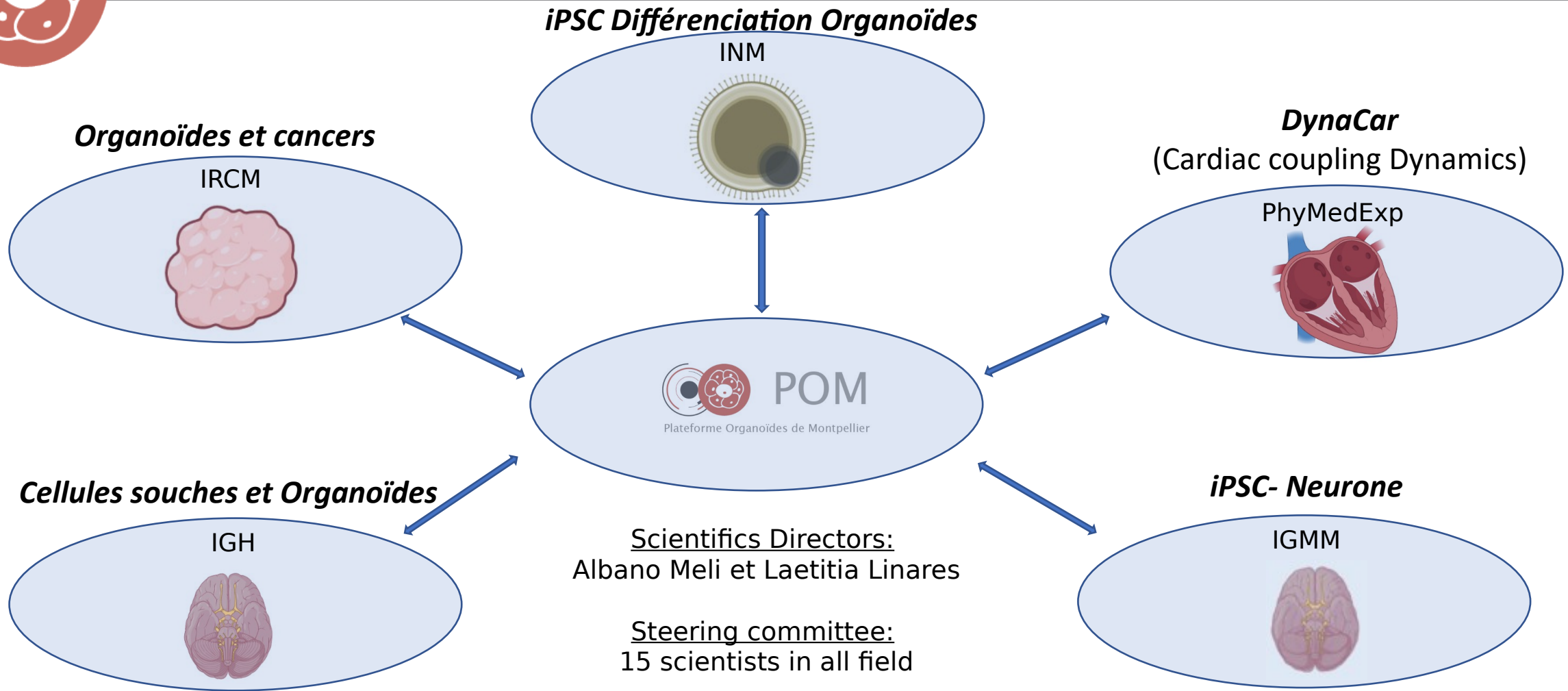
INRAE





Plusieurs instituts pour plusieurs spécialités

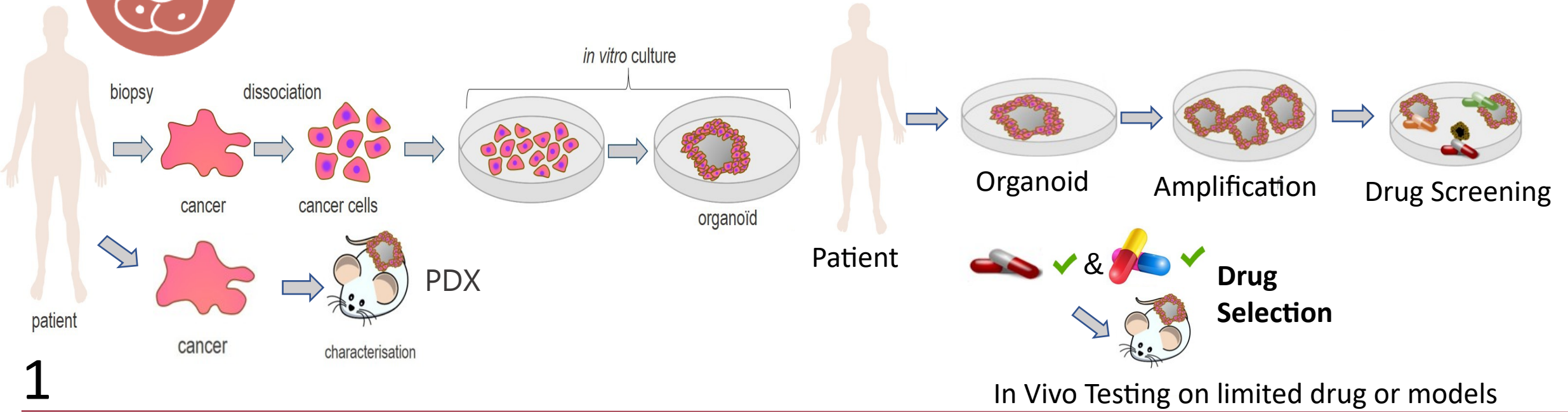
POM





Organoïdes et Cancers (IRCM)

POM



1

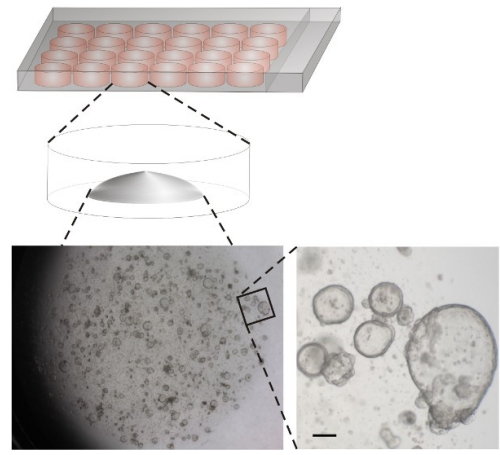
Biobank de modèles rare



2

Aide/Apprentissage aux équipes d'intérêts

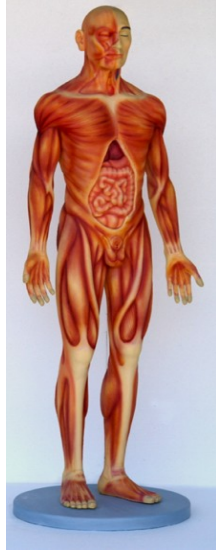
3





« PhyMedExp » Organe sur puce neurocardiaque dérivé du patient

Patient atteint d'une maladie cardiaque héréditaire associée à un trouble neurologique



Sang

Reprogrammation des hiPSC

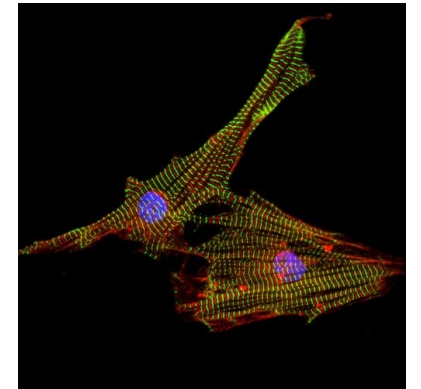
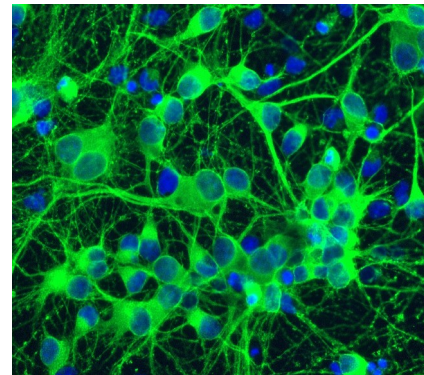
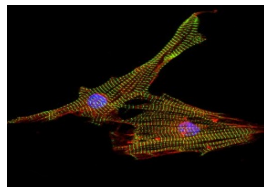
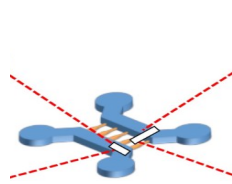
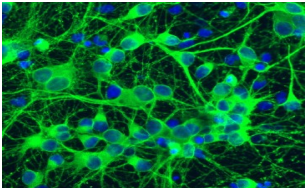
(CRISPR/Cas 9)

Cellules isogéniques de contrôle hiPSC corrigées

Neurones dérivés de hiPSC

Cardiomyocytes dérivés de hiPSC

Puce microfluidiques



Neurocardiaque organ-on-chip

Modélisation de la maladie
Médecine personnalisée
Pharmacotoxicité

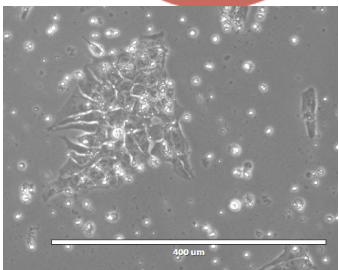


Bernardin *et al.*, 2022

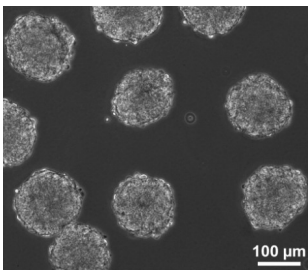


Création de jonction Neuromusculaire humaine (IGMM) POM

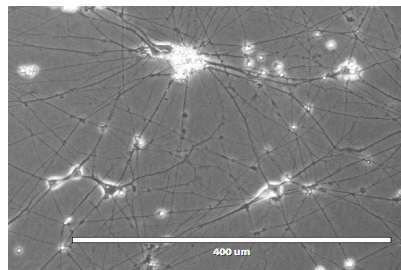
MNs from iPSC



IPS cells



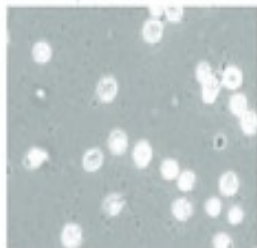
Embryoid Bodies



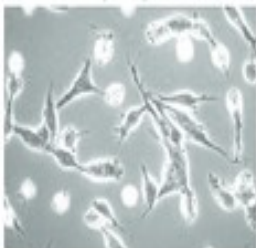
Motor Neurons

Muscles from biopsies or from progenitors derived from iPSC

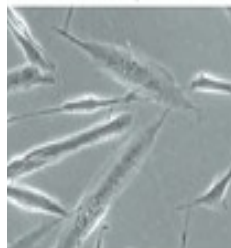
Myoblasts



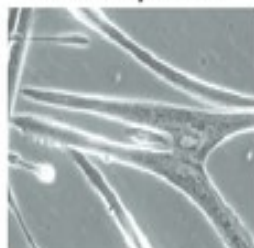
Myocytes



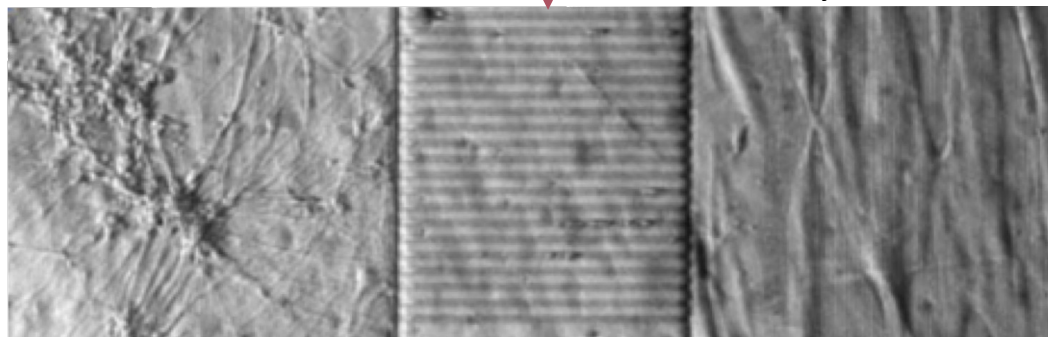
Nascent myotubes



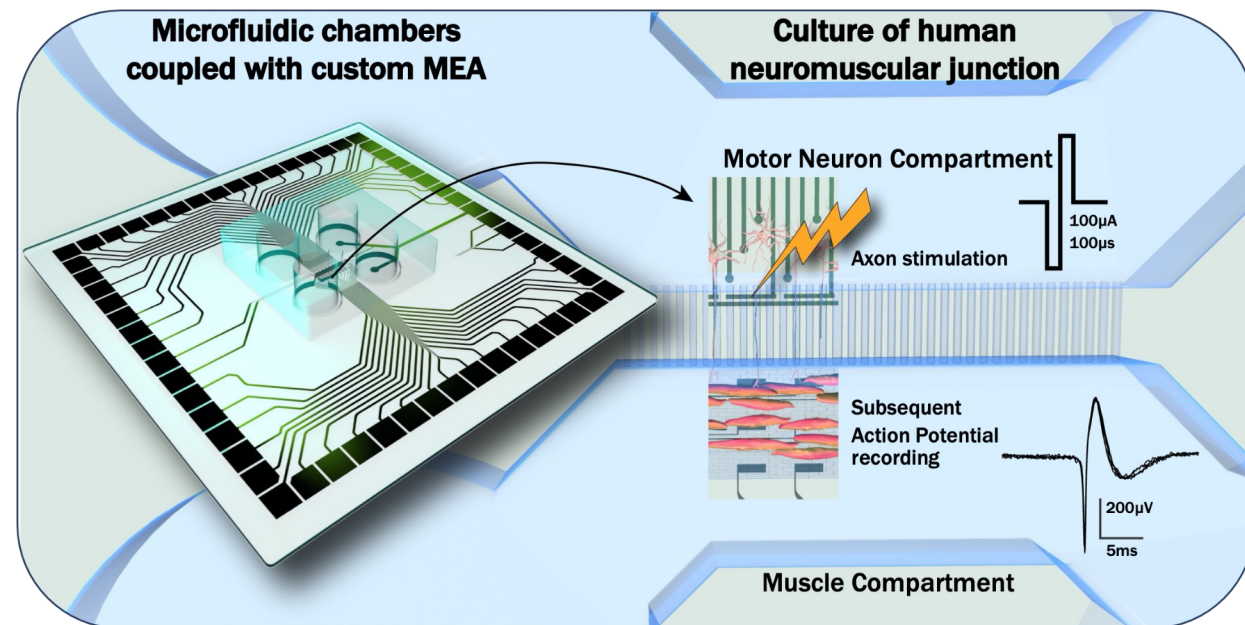
Mature myotubes



Motoneurones

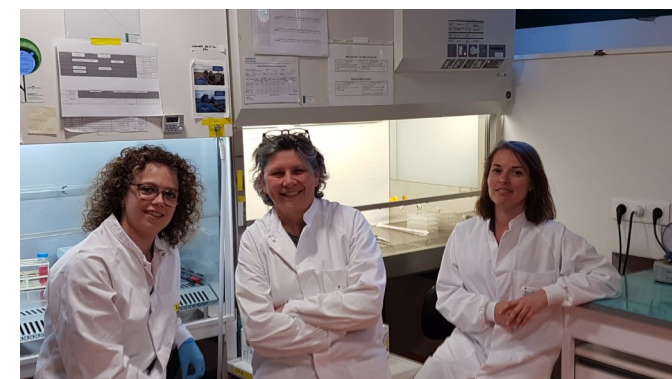


Co-culture in microfluidic devices.



Duc. Et al., Lab on Chip 2021

Pauline Duc
Audrey Moisan
Florence Rage



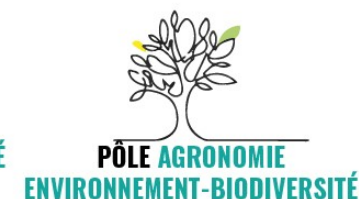


Plateforme Organoïde de Montpellier

POM

<https://www.biocampus.cnrs.fr/>

Accueil > Plateformes > POM



COMITÉ DE DIRECTION

- Carole CROZET
- John DE VOS
- Vasiliki KALATZIS
- Laetitia LINARES
- Domenico MAIORANO
- Albano MELI
- Julie PANNEQUIN
- Isabelle PEIFFER
- Florence RAGE

DIRECTION DE LA PLATEFORME POM

Responsable Scientifique :

- Albano MELI
(CR, INSERM, 5%)

Responsable scientifique adjoint :

- Laetitia LINARES
(DR, INSERM, 5%)

Responsable opérationnel :

- Isabelle PEIFFER
(IR, CNRS, 5%)

Laetitia Linares : Laetitia.linares@inserm.fr
Albano Meli : Albano.meli@inserm.fr
Isabelle Peiffer : isabelle.peiffeir@igh.cnrs.fr
Florence Rage : Florence.rage@igmm.cnrs.fr
Julie Pannequin : Julie.pannequin@igf.cnrs.fr
Domenico Maiorano : domenico.maiorano@igh.cnrs.fr
Benjamin Ginter : benjamin.ginter@inserm.fr

